



GEARHEADS(POWERFUL TYPE) Frame size 90mm sq. (3.54 in. sq.)

BALL BEARING TYPE

▶ **RATED TORQUE OF GEARHEAD**

MODEL	Speed(rpm)		500	300	200	120	100	60	50	30	20	15	10	6	5	3	2	1	
	Ratio	Speed	50Hz	3	5	7.5	12.5	15	25	30	50	75	100	150	250	300	500	750	1500
			60Hz	3.6	6	9	15	18	30	36	60	90	120	180	300	360	600	900	1800
L9VK□B L9WK□B L9V10D(DECIMAL)	High	kg-cm	19.4	32.4	48.6	73.0	87.6	132.0	158.4	200	200	200	200	200	200	200	200	200	200
	Low		9.7	16.2	24.3	36.5	43.8	66.0	79.2	132.0	177.0	200	200	200	200	200	200	200	200
	High	N-m	1.91	3.18	4.76	7.15	8.58	12.94	15.52	19.60	19.60	19.60	19.60	19.60	19.60	19.60	19.60	19.60	19.60
	Low		0.95	1.59	2.38	3.58	4.29	6.47	7.76	12.94	17.35	19.60	19.60	19.60	19.60	19.60	19.60	19.60	19.60
	High	oz-in	270	450	675	1014	1216	1833	2200	2777	2777	2777	2777	2777	2777	2777	2777	2777	2777
	Low		135	225	337	507	608	917	1100	1833	2458	2777	2777	2777	2777	2777	2777	2777	2777

- * The normal torque is that the motor and gearhead are directly coupled.
- * Insert the denominator of reduction ratio in □ of gearhead model name.
- * Actual rotation speed is 2-15% less than synchronous speed.
- * ■Color indicates that the rotation of gearhead shaft is in opposite direction as output shaft of motor.

With Decimal Gearhead

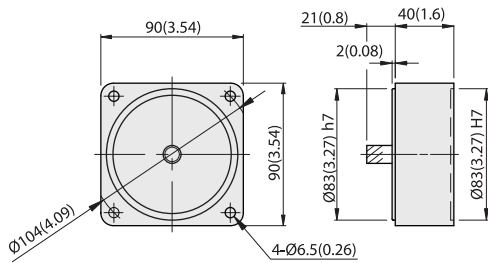
SPEED CONTROL
INDUCTION MOTORS

DIMENSIONS

Unit : mm(inch)

DECIMAL GEARHEAD

L9V10D

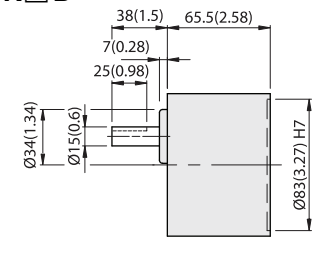


WEIGHT 0.6kg (1.3 lb)

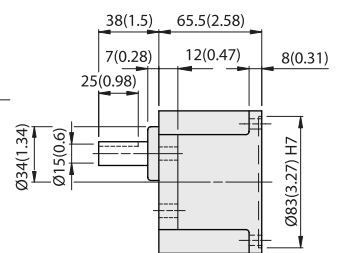
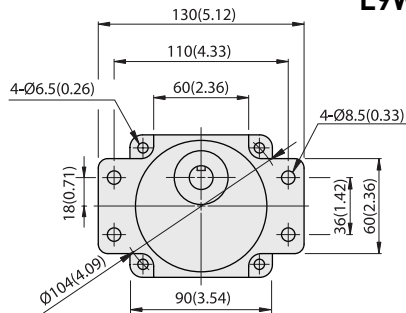


GEARHEAD

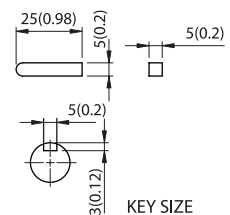
L9VK□B



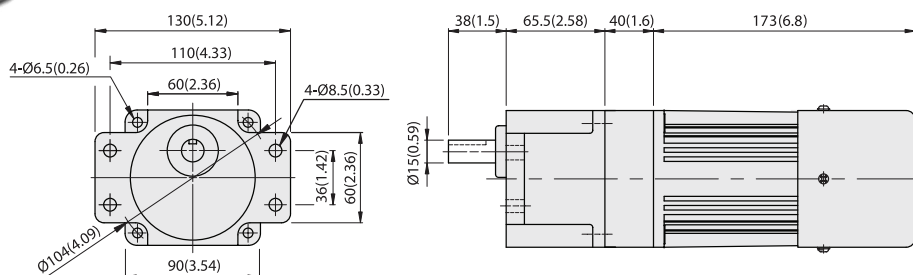
L9WK□B



MODEL	GEAR RATIO	WEIGHT		BOLT
		kg	lb	
L9VK□B	1/3~1/200	1.5	3.3	M6x95
L9WK□B	1/3~1/200	1.6	3.5	M6xL25



L9WK□B + L9V10D + L9I120P□HT





GEARHEADS(ULTRA POWERFUL TYPE) Frame size 90mm sq. (3.54 in. sq.)

BALL BEARING TYPE

▶ RATED TORQUE OF GEARHEAD

MODEL	Speed(rpm)		500	300	200	120	100	60	50	30	20	15	10	6	5	3	2	1	
	Ratio	Speed	50Hz	3	5	7.5	12.5	15	25	30	50	75	100	150	250	300	500	750	1500
			60Hz	3.6	6	9	15	18	30	36	60	90	120	180	300	360	600	900	1800
L9UK□B L9V10D(DECIMAL)	High	kg-cm	19.4	32.4	48.6	73.0	87.6	132.0	158.4	264.0	300	300	300	300	300	300	300	300	300
	Low		9.7	16.2	24.3	36.5	43.8	66.0	79.2	132.0	177.0	236.0	300	300	300	300	300	300	300
	High	N-m	1.91	3.18	4.76	7.15	8.58	12.94	15.52	25.87	29.40	29.40	29.40	29.40	29.40	29.40	29.40	29.40	29.40
	Low		0.95	1.59	2.38	3.58	4.29	6.47	7.76	12.94	17.35	23.13	29.40	29.40	29.40	29.40	29.40	29.40	29.40
	High	oz-in	270	450	675	1014	1216	1833	2200	3666	4166	4166	4166	4166	4166	4166	4166	4166	4166
	Low		135	225	337	507	608	917	1100	1833	2458	3277	4166	4166	4166	4166	4166	4166	4166

- * The normal torque is that the motor and gearhead are directly coupled.
- * Insert the denominator of reduction ratio in □ of gearhead model name.
- * Actual rotation speed is 2-15% less than synchronous speed.
- * Color indicates that the rotation of gearhead shaft is in opposite direction as output shaft of motor.

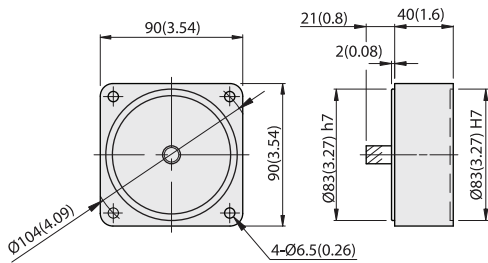
With Decimal Gearhead

DIMENSIONS

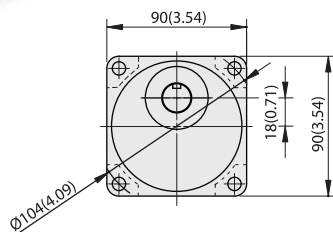
Unit : mm(inch)

DECIMAL GEARHEAD

L9V10D

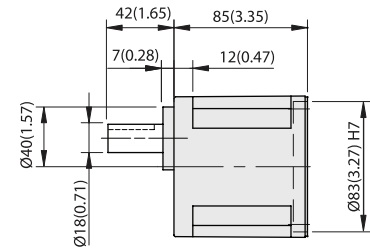


WEIGHT 0.6kg (1.3 lb)

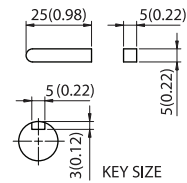


GEARHEAD

L9UK□B



MODEL	GEAR RATIO	WEIGHT		BOLT
		kg	lb	
L9UK□B	1/3~1/200	1.95	4.3	M6xL20



KEY SIZE

L9UK□B + L9I120P□HT

